

Survey of School grounds and Location
of Building. Corner Quincy & 26th St

June 21st 92

Ground described as follows:-

- Beginning at N.W. Cor. of block 24th & C
 Thence E. 8 rods along S. line 26th St
 Thence S. 10 rods at right angles
 " N. 8 " at " " * Quincy Ave
 " N. 10 " along E. line Quincy Ave

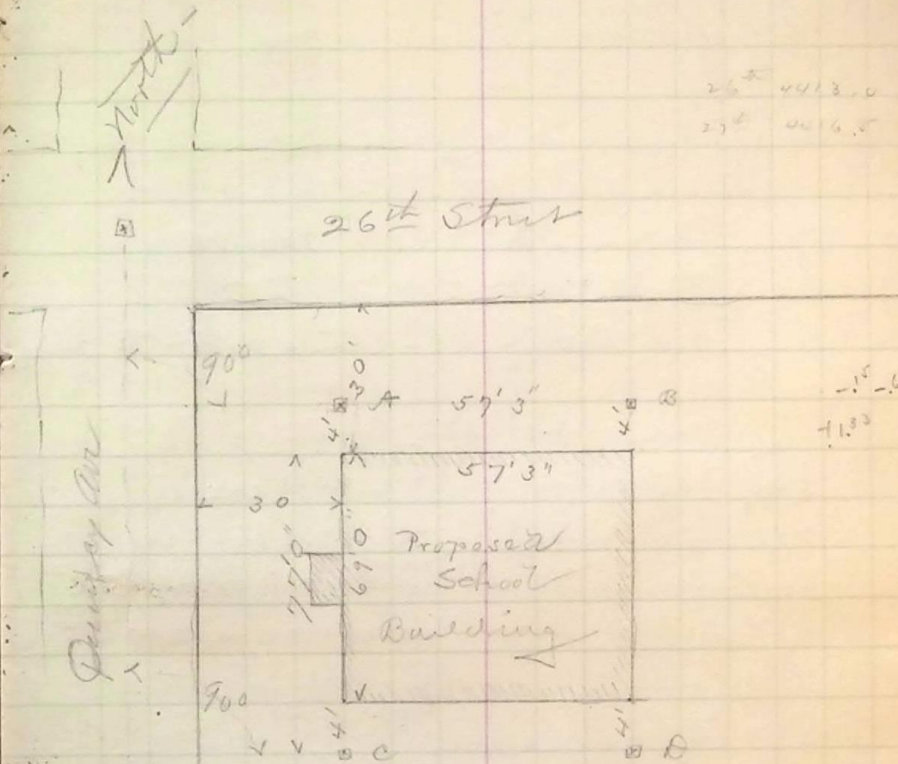
Set Hubs at points A, B, C & D only.
 for neat foundation lines - by
 running between monuments at 26th & 27th
 and turning right angles as shown

Elevations of tops of Hubs -

	6.81	4419.21	4412.40
A			4.56 14.65
B			3.72 15.41
C			4.70 14.51
D			3.60 15.61
			6.68 12.53
			05.50

Levels for setting level stakes at each corner

	6.29	4417.19	4411.40
			3.19 4416.00



Elevations of Hubs - driven to surface of ground

Elevation top of manhole cover
 Elev. of E. Drive at manhole

4416.00 = Elevation of grade stakes set at each corner viz - at A B C & D - being for ground line of building - but this will be set 6" higher.